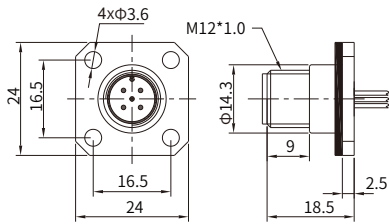


# M12 A-coding (Sensor and Actuator)

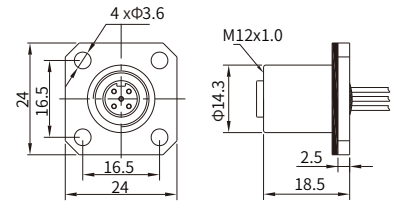


## M12 A-coding Straight Connector, Panel Mount, Solder, with Flange

Male



Female



### Specifications

Contacts	3	4	5	8	12	17
Certification	cRU US CYJV2(CYJV8).E321413					
Pin layout(Male)						
Pin layout(Female)						
Standard	IEC 61076-2-101					
Ambient temperature	-15°C~+85°C (flexible installation), -30°C~+85°C (fixed installation)					
Customized temperature	-25°C ~ +85°C (flexible installation), -40°C ~ +85°C (fixed installation)					
Connector insert	TPU					
Connector contacts	Brass with gold plated					
Coupling nut/screw	Brass with nickel plated					
Seal/O-ring	Epoxy resin / FKM					
Insulation resistance	≥ 100MΩ					
Contact resistance	≤ 5mΩ					
Earth tag/pin	Unavailable					
IP rating	IP67, IP68 in locked condition					
Mating endurance	>500 cycles					
Rated current	4 A		60V AC/DC		2A	1.5A
Rated voltage	250V AC/DC		60V AC/DC		30V AC/DC	30V AC/DC
Wire gauge	0.34mm <sup>2</sup> (AWG22)		60V AC/DC		0.25mm <sup>2</sup> (AWG24)	0.14mm <sup>2</sup> (AWG26)

### Part Number

Pins	Cable length	Male	Female
3	0.1m	MB12MSAFLF03ST-3401	MB12FSAFLF03ST-3401
	0.3m	MB12MSAFLF03ST-3403	MB12FSAFLF03ST-3403
4	0.1m	MB12MSAFLF04ST-3401	MB12FSAFLF04ST-3401
	0.3m	MB12MSAFLF04ST-3403	MB12FSAFLF04ST-3403
5	0.1m	MB12MSAFLF05ST-3401	MB12FSAFLF05ST-3401
	0.3m	MB12MSAFLF05ST-3403	MB12FSAFLF05ST-3403
8	0.1m	MB12MSAFLF08ST-2501	MB12FSAFLF08ST-2501
	0.3m	MB12MSAFLF08ST-2503	MB12FSAFLF08ST-2503
12	0.1m	MB12MSAFLF12ST-1401	MB12FSAFLF12ST-1401
	0.3m	MB12MSAFLF12ST-1403	MB12FSAFLF12ST-1403
17	0.1m	MB12MSAFLF17ST-1401	MB12FSAFLF17ST-1401
	0.3m	MB12MSAFLF17ST-1403	MB12FSAFLF17ST-1403

### Default wire colors

Pin No.						
Pin 1	BN	BN	BN	WH	WH	BN 13. WH/GN
Pin 2		WH	WH	BN	BN	BU 14. BN/GN
Pin 3	BU	BU	BU	GN	GN	WH 15. WH/YE
Pin 4	BK	BK	BK	YE	YE	GN 16. YE/BN
Pin 5			GY	GY	GY	PK 17. WH/GY
Pin 6				PK	PK	YE
Pin 7				BU	BU	BK
Pin 8				RD	RD	GY
Pin 9					OR	RD
Pin 10					TP	VT
Pin 11					BK	GY/PK
Pin 12					VT	RD/BU